



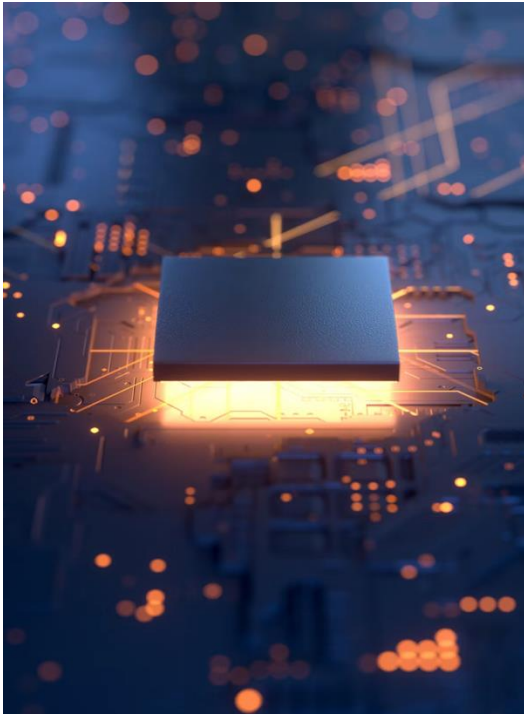
## **Case Study**

See how Paycross revolutionized  
one of the world's leading Cell  
Phone Repair businesses

**[www.paycrossgo.com](http://www.paycrossgo.com)**

## The Business

Located multiple sites across the United States, our client was juggling multiple, tethered Point-of-Sale systems and software to manage their expanding Cell Phone repair business. With multiple sites and customer site visits, we recommended 'freeing' the business of its ties employing mobile payment devices to enable payment processing, anywhere, anytime.



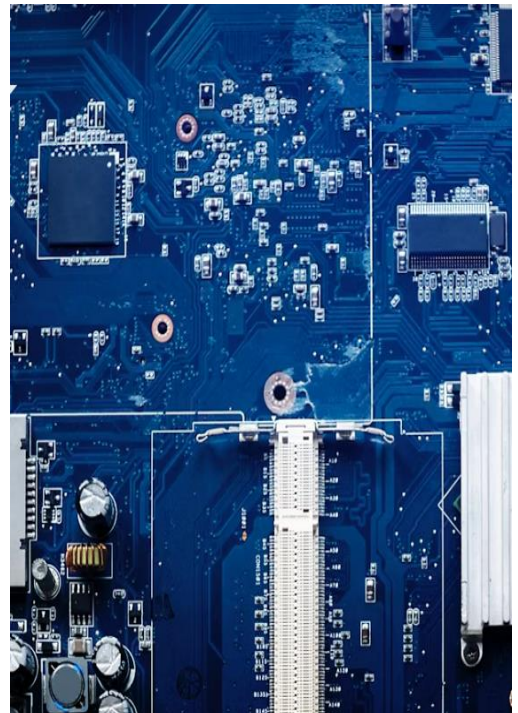
## The Results

The business doesn't need to go to lengthy paperwork and administrative exercises any longer as it is able to not only charge at the Point-of-Sale but charge whilst mobile at customer sites. The net increase to the business both financially and in terms of the ability to process sales off-site has been so impactful, the business is now expanding to States-wide with their unique brand of Cell Phone Repair solutions.



## The Solution

Site-specific EPoS management software and mobile payment terminals that 'reconcile' in real-time at the place of business or in the field.



## The Solution

Business EPoS management software and mobile payment terminals that 'reconcile' real-time at the place of business or in the field at customer sites or major off-site events. Following an extensive review of the company's existing systems and procedures, Paycross recommended our mighty business management software and mobile payment terminals manufactured by Newland to allow the business to take payments - anytime, anywhere.



Our powerful cloud-based Point-of-Sale solution combined with smarter payments experiences and the beautiful Newland machines with their enormous merchant facing displays now enable the business with **SMARTER MENU MANAGEMENT**, simplifying inventory with modifiers and infinite variations, **DISCOUNTS**, creating advanced Offer Deal Management like discounted repairs at specific times, **AUTO-RECONCILIATIONS**, seamlessly integrating with finance and accounting applications to control inventory and manage invoicing pre or post-payment electronically, **ORDER MANAGEMENT**, assigning invoicing to multiple sites and printers, wirelessly in real-time **ONLINE ORDERING**, creating mobile sites with a few clicks and **CUSTOMER MANAGEMENT**, tracking client spends and enabling them to deposit funds, leverage cashflow, build new banking solutions or control customer engagement direct from the EPoS system's multi-functional dashboard.




**Newland<sub>NPT</sub>**

# N950

## FLAGSHIP ANDROID SMARTPOS



201

62

79.8

With ground-breaking design and user-friendly ergonomics, N950 sets a new benchmark for Android SmartPOS terminals. Leveraging a state-of-the-art processor and high-performance chipset, N950 allows business users to seamlessly combine point-of-sale and value-added services with fast payment acceptance, by card or mobile wallet. Customer engagement takes on a whole new dimension.



MALL



RESTAURANT



HOTEL



AIRPORT



STADIUM



# PAYCROSS®

OS	Android 12	●
Processor	AP: Cortex Quad-core A53, 2.0GHz SP: ARMv7-M security core	●
Memory	2GB RAM, 16GB FLASH	●
	3GB RAM, 32GB FLASH	Optional
	4GB RAM, 64GB FLASH	Optional
	MicroSD card slot up to 256GB	●
Display	6-inch TFT full color LCD display, resolution of 1440 x 720, with adjustable backlight, capacitive multi-touch screen, support electronic signature	●
Wireless Communication	4G / 3G / 2G	●
	Wi-Fi (802.11 a/b/g/n/ac) 2.4G&5G, Bluetooth 2.1/5.0	●
Positioning	GPS, GLONASS, BEIDOU	●
Magnetic Card Reader	Triple track, bi-directional, conforming to ISO 7810/7811/7813	●
Smart Card Reader	EMV L1/L2, conforming to ISO 7816, 1.8V/3V/ 5V, synchronous & asynchronous, T=0 & T=1	●
Contactless Card Reader	EMV Contactless L1, conforming to ISO 14443 Type A/B, Mifare , Felica	●
Camera	0.3 MP front camera, support 1D/2D code payment	●
	2 MP front camera, support 1D/2D code payment	Optional
	5 MP autofocus rear camera with flashlight, support 1D/2D code payment	●
	8 MP autofocus rear camera with flashlight, support 1D/2D code payment	Optional
	Professional code scanner, NLS-N1, hardware decoding, support 1D & 2D code payment Note: The rear camera and scanner cannot be used simultaneously as they are mutually exclusive features.	Optional
Audio	1 x Speaker, 1 x Microphone, support audio recording and media play	●
Keypad	Secure virtual keypad for PIN entry, 1 x power button, 1 x VOL+, 1 x VOL-	●
Printer	High-speed thermal printer, 80mm/s      Paper roll diameter: 40mm      Paper width: 58mm	●
Peripheral Ports	1 x Type C port	●
Card Slots	2 x SIM, 2 x SAM, 1 x SD	●
	1 x SIM, 3 x SAM, 1 x SD, 1 x eSIM	Optional
Battery	Li-ion battery, 7.2V/2600mAh/18.7Wh (Equal to 3.6V/5200mAh)	●
	Li-ion battery, 7.2V/3300mAh/23.7Wh (Equal to 3.6V/6600mAh)	Optional
Power Supply	Input: 100-240V AC 50/60Hz      Output: 5.0V DC, 2.0A	●
Docking Station	Charging base	Optional
Expansion HUB	RS232 (RJ12/RJ11), 2 x USB-A, Type-C, Ethernet (RJ45)	Optional
Dimensions	201mm (L) *79.8mm (W) *62mm (H)	●
Weight	464g including battery	●
Environment	Operating temperature: -10°C~50°C (14°F~122°F) ①	●
	Storage temperature: -20°C~60°C (-4°F~140°F)	●
	Relative humidity: 5%~95% (Non-condensing)	●
Certifications②	① Charging below 0°C is not recommended as it will affect battery performance.	
	PCI PTS 6.x, EMV L1/L2, EMV Contactless L1, PayPass, payWave, American ExpressPay, Discover D-PAS, UnionPay QuickPass, JCB, TQM, CE, RoHS, MCCS, CB, Interac, ATEX	
	② Please contact Newland NPT sales representative for the latest certification status.	



Best-in-class design and advanced ergonomics.



Unprecedented processing power and performance.



Professional barcode scanning module embedded to read 1D/2D codes quickly and accurately.



Newland Payment Technology

©2025 Fujian Newland Payment Technology Co., Ltd. All rights reserved.  
Please be aware that all features and specifications are subject to change without prior notice.





**Take Payments.  
Anytime.  
Anywhere.<sup>SM</sup>**

